



**REGIONAL SPECIALISED METEOROLOGICAL CENTRE-TROPICAL CYCLONES, NEW DELHI**  
**TROPICAL CYCLONE ADVISORY BULLETIN NO. 14**

---

**FROM: RSMC –TROPICAL CYCLONES, NEW DELHI**

**TO: STORM WARNING CENTRE, NAYPYI TAW (MYANMAR)**  
**STORM WARNING CENTRE, BANGKOK (THAILAND)**  
**STORM WARNING CENTRE, COLOMBO (SRILANKA)**  
**STORM WARNING CENTRE, DHAKA (BANGLADESH)**  
**STORM WARNING CENTRE, KARACHI (PAKISTAN)**  
**METEOROLOGICAL OFFICE, MALE (MALDIVES)**  
**OMAN METEOROLOGICAL DEPARTMENT, MUSCAT (THROUGH RTH JEDDAH)**  
**YEMEN METEOROLOGICAL SERVICES, REPUBLIC OF YEMEN (THROUGH RTH JEDDAH)**  
**NATIONAL CENTRE FOR METEOROLOGY, UAE (THROUGH RTH JEDDAH)**  
**PRESIDENCY OF METEOROLOGY AND ENVIRONMENT, SAUDI ARABIA (THROUGH RTH JEDDAH)**  
**IRAN METEOROLOGICAL ORGANISATION, (THROUGH RTH JEDDAH)**  
**QATAR METEOROLOGICAL DEPARTMENT (THROUGH RTH JEDDAH)**

**TROPICAL CYCLONE ADVISORY NO. 13 FOR NORTH INDIAN OCEAN (THE BAY OF BENGAL AND ARABIAN SEA) VALID FOR NEXT 120 HOURS ISSUED AT 0030 UTC OF 04.06.2020 BASED ON 0000 UTC OF 04.06.2020.**

**SUB: DEPRESSION OVER WESTERN PARTS OF VIDARBHA [REMNANT OF THE SEVERE CYCLONIC STORM 'NISARGA']**

THE DEEP DEPRESSION [REMNANT OF THE SEVERE CYCLONIC STORM 'NISARGA'] OVER MADHYA MAHARASHTRA MOVED EAST NORTHEASTWARDS WITH A SPEED OF ABOUT 23 KMPH DURING PAST 06 HOURS WEAKENED IN TO A DEPRESSION , AND LAY CENTRED AT 0000 UTC OF 04<sup>TH</sup> JUNE, 2020, NEAR LATITUDE 20.5°N AND LONGITUDE 76.0°E, OVER WESTERN PARTS OF VIDARBHA, ABOUT 110KM WEST SOUTH WEST OF AKOLA (42933), 320 KM WEST SOUTH WEST OF NAGPUR (42867) AND 100KM NORTHEAST OF AURANGABAD (43013).

IT IS VERY LIKELY TO MOVE EAST NORTHEASTWARDS AND WEAKEN INTO A WELL MARKED LOW PRESSURE AREA DURING THE NEXT 12 HOURS.

**AS PER INSAT-3D SATELLITE IMAGERY BASED ON 0000 UTC OF 04<sup>TH</sup> JUNE, THE SYSTEM HAS FURTHER WEAKENED OVER THE LAND. INSAT 3D FURTHER SHOWS ASSOCIATED BROKEN LOW/MEDIUM CLOUDS WITH EMBEDDED INTENSE TO VERY INTENSE CONVECTION BETWEEN LATITUDE 18 °N TO 22.0°N AND LONGITUDE 73.0°E TO 75.0°E. MINIMUM CLOUD TOP TEMPERATURE (CTT) IS MINUS 50°C.**

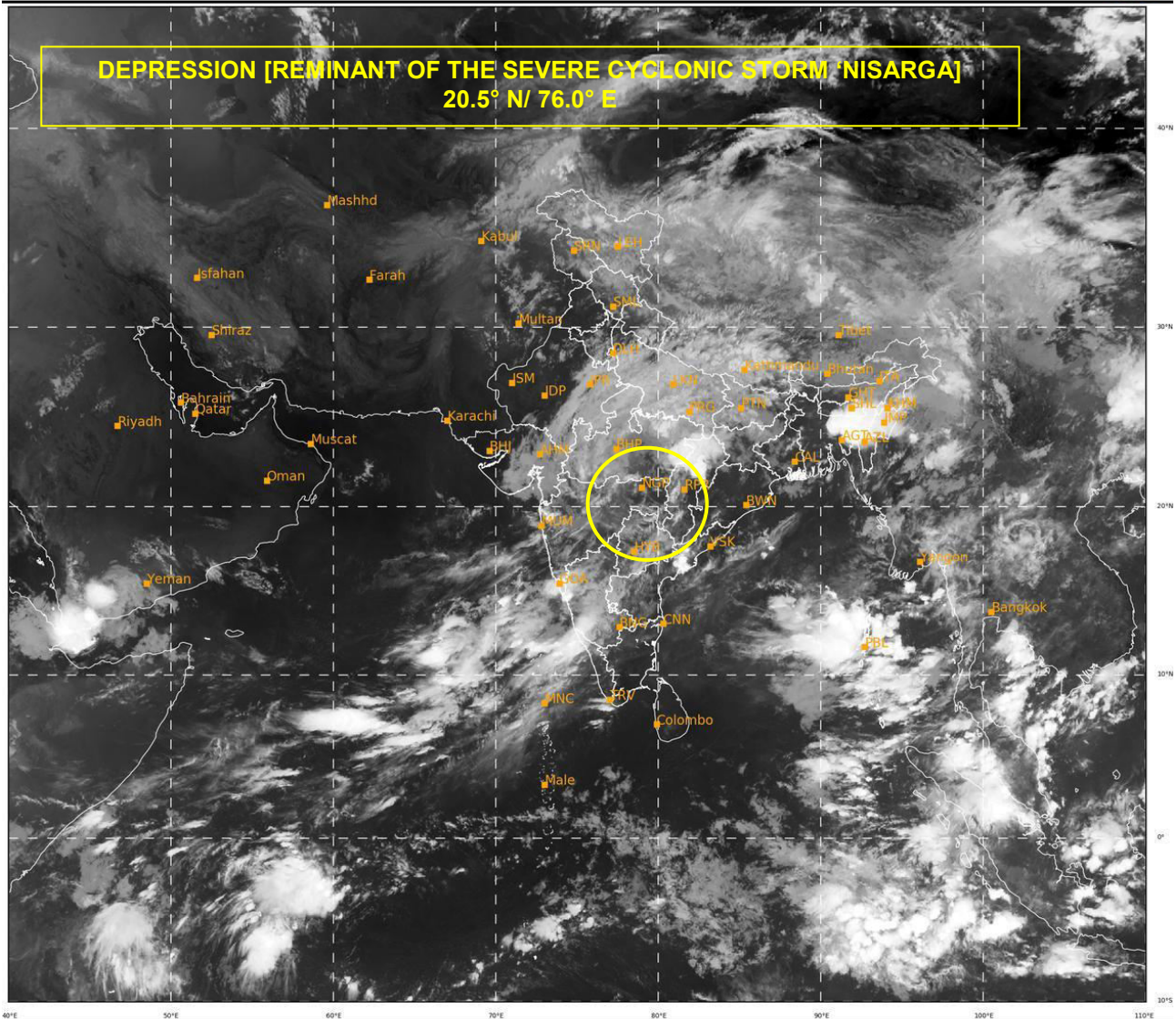
THIS IS THE LAST BULLETIN ASSOCIATED WITH THIS SYSTEM. REGULAR TROPICAL WEATHER OUTLOOK WILL BE CONTINUED.

**(V. R DURAI)**  
**SCIENTIST-E,**  
**RSMC, NEW DELHI**

---

**PROBABILITY OF CYCLOGENESIS (FORMATION OF DEPRESSION)**

**NIL: 0%, LOW: 1-25%, FAIR: 26-50%, MODERATE: 51-75% AND HIGH: 76-100%**



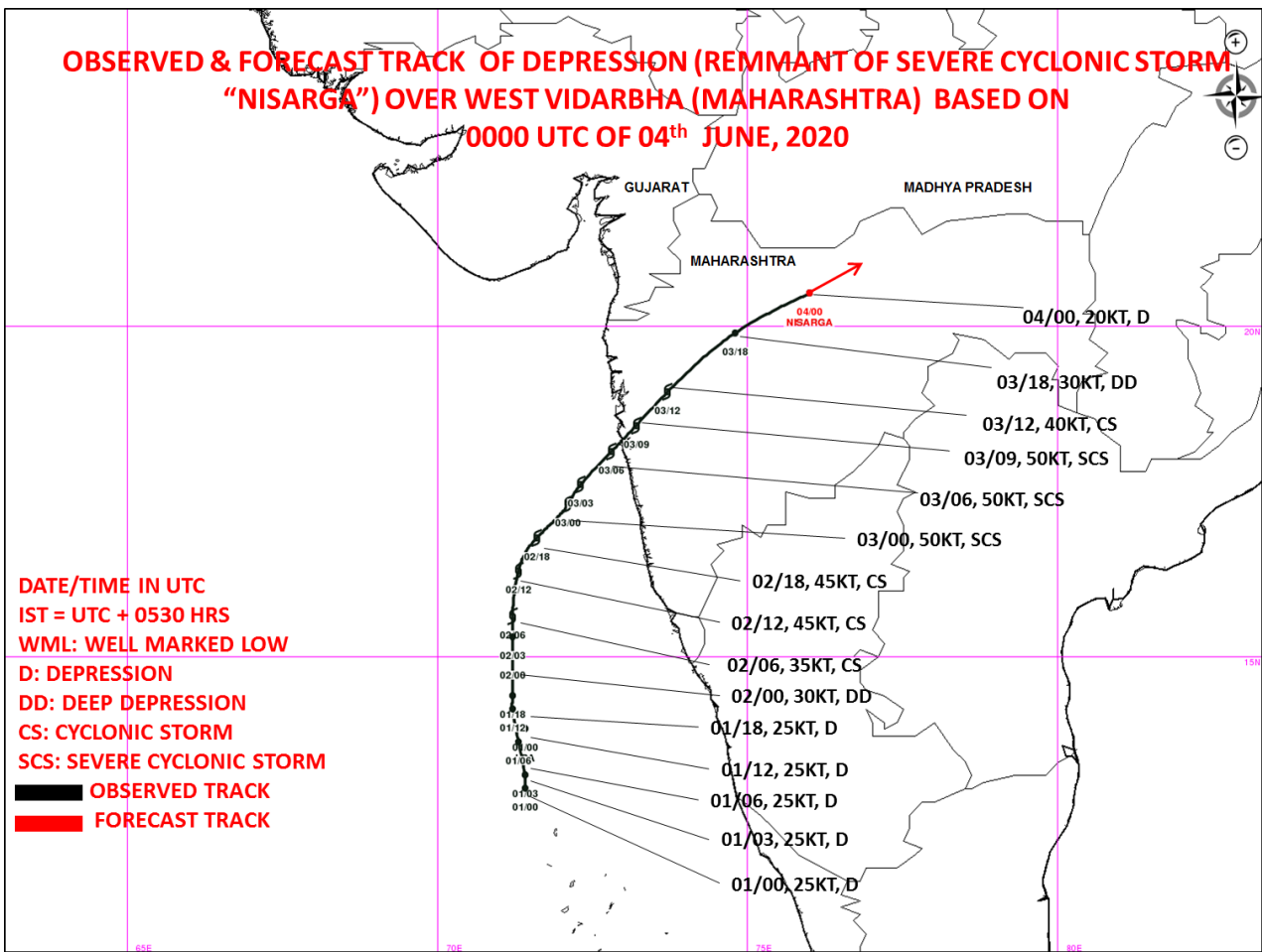
412

935

IMD, DELHI

**PROBABILITY OF CYCLOGENESIS (FORMATION OF DEPRESSION)**  
**NIL: 0%, LOW: 1-25%, FAIR: 26-50%, MODERATE: 51-75% AND HIGH: 76-100%**

**OBSERVED & FORECAST TRACK OF DEPRESSION (REMMANT OF SEVERE CYCLONIC STORM "NISARGA") OVER WEST VIDARBHA (MAHARASHTRA) BASED ON 0000 UTC OF 04<sup>th</sup> JUNE, 2020**



**PROBABILITY OF CYCLOGENESIS (FORMATION OF DEPRESSION)**

**NIL: 0%, LOW: 1-25%, FAIR: 26-50%, MODERATE: 51-75% AND HIGH: 76-100%**